

# Radisson Resort Phuket Mai Khao Beach Construction Report

Date: March 2021

Report Number: 017 March 2021



Radisson Phuket Mai Khao Beach Construction Progress Report

Disclaimer: <https://turtlebayphuket.com/disclaimer/>

Welcome to the monthly construction report for the Radisson Mai Khao Beach project. This update will be issued monthly during the construction phase and will be available on website at end of each month. It will keep our valued customers up to speed with the progress milestones during the period for construction. We provide a pictorial story and general detail of the works completed within the month, and the works schedule for the following month.

### **General & Site information:**

The site is located in Mai Khao area of Phuket Thailand between Soi Mai Khao 6 And Soi Mai Khao 7

A google map reference can be found on following link:

<https://www.google.com/maps/@8.1238403,98.3072577,1592m/data=!3m1!1e3>

A sales gallery is constructed, and already available on site from 09:00-18:00



Visit onto the construction area is strictly controlled and by appointment only, please contact [tom@aplanproperties.com](mailto:tom@aplanproperties.com) to arrange any visit to the construction area.

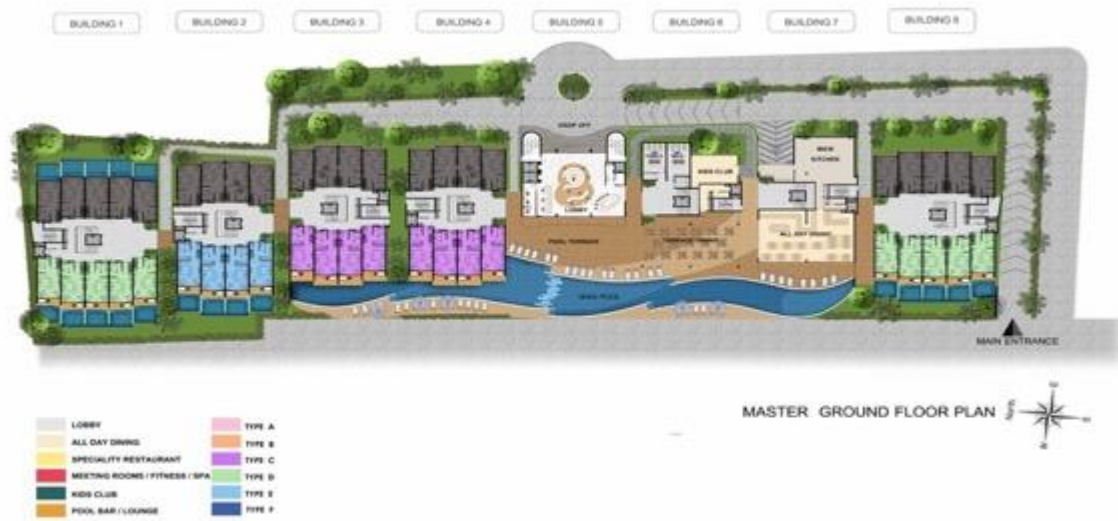
The preliminary works commenced in November 2019  
Ground works commenced 10<sup>th</sup> December 2019

Please visit our websites at:

[www.turtlebayphuket.com](http://www.turtlebayphuket.com)

[www.tcphg.com](http://www.tcphg.com)

[www.aplanproperties.com](http://www.aplanproperties.com)



## Radisson Phuket Mai Khao Beach Construction Progress Report

Disclaimer: <https://turtlebayphuket.com/disclaimer/>



## Radisson Phuket Mai Khao Beach Construction Progress Report

Disclaimer: <https://turtlebayphuket.com/disclaimer/>

### **COVID 19 Update**

Thailand has now commenced its vaccination programme, in limited numbers, the scheme is due to pick up pace in 2<sup>nd</sup> half of this year. A revision of the quarantine rules for International entry is now coming into effect for visitors who have been vaccinated, shorter quarantine times are being rolled out. Tentative dates for unrestricted access are being considered as 1<sup>st</sup> October but not confirmed as yet, cases remain low with isolated hotspots being targeted as and when they occur.

### **CSR Update**

The project team and local authorities continue to clean the beaches each Saturday. An Island wide beach clean initiative is due on 1<sup>st</sup> April and we will provide support in front of our property for a range of about 1.5KMS. The Turtle nest has hatched but a large number of the eggs were unfertilised or did not mature. A small number of turtles did make it to the sea.

### **THAI NEW YEAR**

Please note that April has a number of Public holidays, notably the Thai New Year as such the site will be closed 10<sup>th</sup> - 18<sup>th</sup> April, the sales gallery will remain open during this period.

### **MARCH 2021**

#### ***Building 1***

- Polishing of water tanks is completed
- Scaffold for formwork ground floor slab is 98% completed

#### ***Building 2***

- Scaffold for formwork 1<sup>st</sup> floor slab is complete
- Steelwork 1<sup>st</sup> floor slab is complete
- Sleeving 1<sup>st</sup> floor slab is complete
- Post tension Sling has commenced
- Emergency stair Basement to G Is completed
- Blockwork of BOH areas has commenced and is 95% Completed
- Rendering of Walls BOH is 60% Completed
- 1<sup>st</sup> fix air con systems BOH is 85% Completed

#### ***Building 3***

- Path between 3 -4 is complete
- Scaffold and formwork Ground Floor Slab is 98% Complete

**Building 4**

- Retaining walls perimeter completed
- Column works to ground floor level Completed

**Building 5**

- Slab of building 5 basement Complete
- Walls of building 5 Complete
- Column work building 5 to GF level Complete

**Building 6**

- Columns in Building 6 Complete
- Side walls of Ramp going into basement (next to generator room are poured

**Building 7**

- Scaffold in basement to GF slab reduced to 10% support
- Ramp to B Level Poured
- 1<sup>st</sup> Fix Air Cons systems is Complete
- Blockwork of basement functions is 98% Completed
- Rendering of walls is 40% Completed
- Slab 1<sup>st</sup> floor is completed
- Steelwork and sleeve 2<sup>nd</sup> floor slab has completed
- Scaffold support G floor reduced to 20%
- Fire stair structure G to 1<sup>st</sup> floor is completed
- Blockwork of Main kitchen GF has commenced
- Main Stair Structure formwork G-1 is completed
- Slab 2<sup>nd</sup> Floor is completed
- Columns 2<sup>nd</sup> -3<sup>rd</sup> Floor has commenced

**Building 8**

- Steel work GF slab is completed
- Slab G Floor is Completed
- Columns GF – 1<sup>st</sup> Completed
- Scaffold GF – 1<sup>st</sup> Floor is Completed
- Emergency Stair B floor to G Floor Formwork is Completed
- Blockwork BOH space is 90% Completed
- Rendering BOH Walls is 25% completed
- Sanitary 1<sup>st</sup> fix is 80% completed



- Air Con system 1<sup>st</sup> Fix is 75% completed

### **APRIL 2021 Look Ahead**

- Continue Slabs for floors across Buildings 7,2,8,3
- Continue rendering & Blockwork In areas where slabs have been poured and scaffold removed
- Continue 1<sup>st</sup> Fix Air cons systems and Sanitary in relevant areas where blockwork has commenced

### **Photos**



*Steelwork and sleeving Slab 2-1*



*Steelwork and Sleeving 7-2*





*Post tension cabling Slab 7-2*





*Slab steelwork 7-2*



*Concrete slab 7-2*

Radisson Phuket Mai Khao Beach Construction Progress Report

Disclaimer: <https://turtlebayphuket.com/disclaimer/>





*Poring Concrete 7-2*

Radisson Phuket Mai Khao Beach Construction Progress Report

Disclaimer: <https://turtlebayphuket.com/disclaimer/>





*Poured concrete 7-2*



Radisson Phuket Mai Khao Beach Construction Progress Report

Disclaimer: <https://turtlebayphuket.com/disclaimer/>





*Concrete pump 7-2*



*Scaffold remove 7-1*

Radisson Phuket Mai Khao Beach Construction Progress Report

Disclaimer: <https://turtlebayphuket.com/disclaimer/>





*Area 7-1 for the 4 new mock units to replace sales Gallery*



*7-1 What will be 7101-7104 units*

Radisson Phuket Mai Khao Beach Construction Progress Report

Disclaimer: <https://turtlebayphuket.com/disclaimer/>





*Formwork Fire stair 7-1 to 7-2*



*Formwork Fire stair 7-1 to 7-2*





*Erect scaffold 7-3 floor*







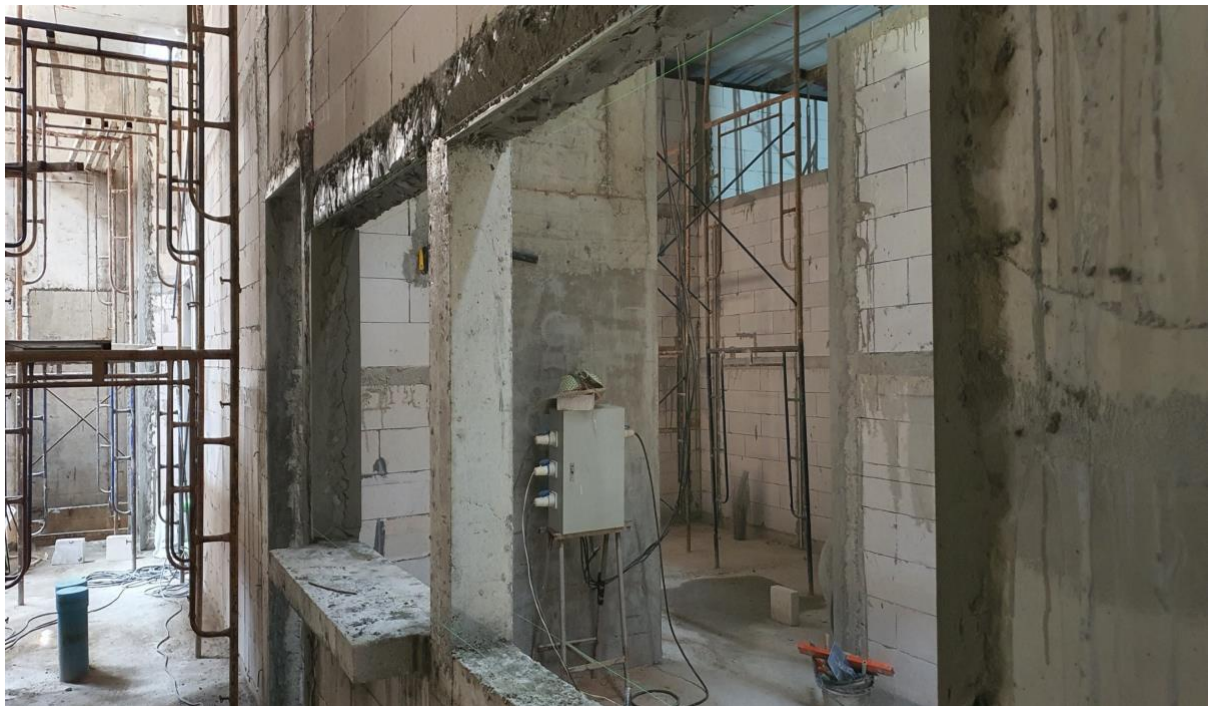
*Loading bay – Uniform issue left side /GR office rear/Dry garbage right*



*Entry to Prep kitchen from park area*



*F&B Office/Dry Store (revised layout)*

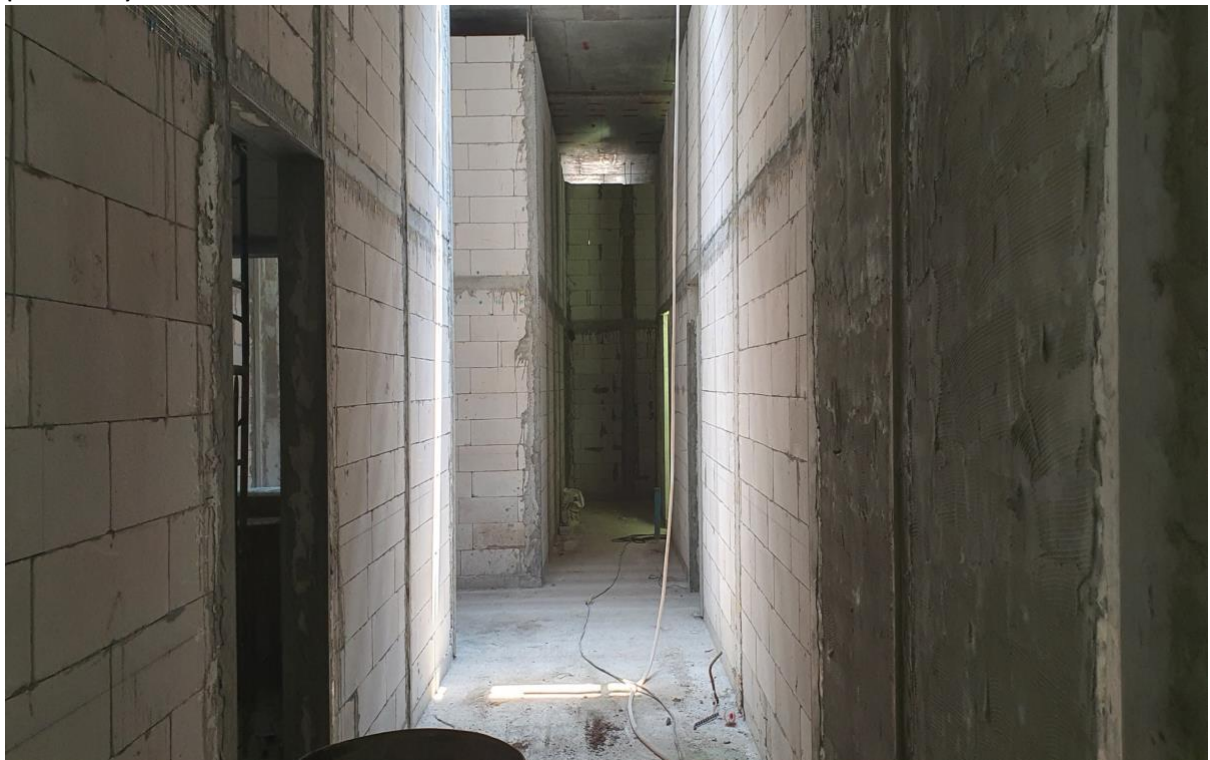


*Security office (Clock in point)*





*IT Satellite Switch room (LH side) and entrance female changing rooms Staff (LH Side)*



*Uniform Issue and corridor to male staff changing/Staff canteen*



*Female Locker area*



*Female Toilets and showers*





*Male Sinks and Urinals*



*Male Lockers*



*Uniform issue pick up point*



*Walkway engineer area*

Radisson Phuket Mai Khao Beach Construction Progress Report

Disclaimer: <https://turtlebayphuket.com/disclaimer/>





*Pump Room (Raw water tank access are openings)*



*Other side of pump room (openings this side are treated tanks)*



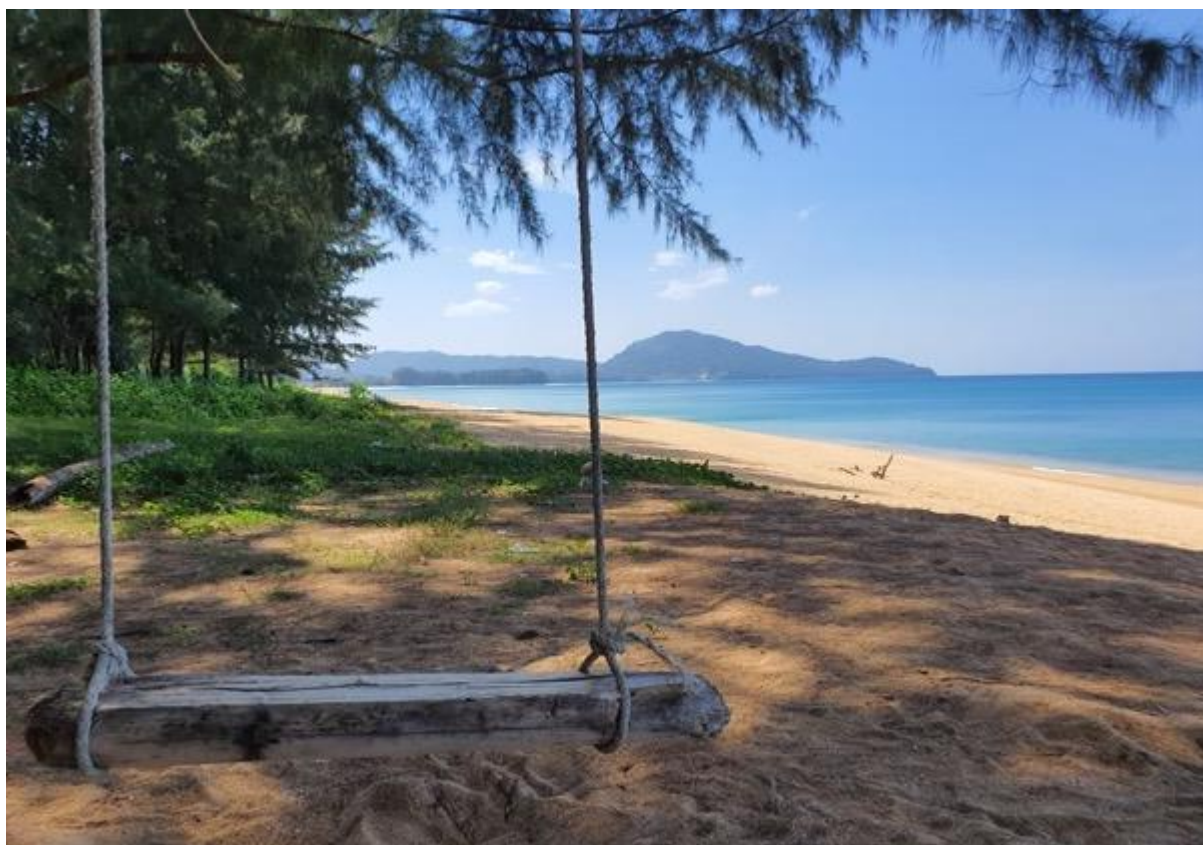
*Inside Treated water tank 1*







Directly in front of the plot, road and cycle/pathway and to the right onto the beach



Start of the beach areas opposite the edge of the plot (at building 8 end)

Radisson Phuket Mai Khao Beach Construction Progress Report

Disclaimer: <https://turtlebayphuket.com/disclaimer/>





View of the beach, looking to the south



Beach looking to the north

Radisson Phuket Mai Khao Beach Construction Progress Report

Disclaimer: <https://turtlebayphuket.com/disclaimer/>



From the beach looking East, back to the project  
NEW PROJECT RENDERS



Rooftop bar



All Day Dining



Front Pool



Type D & E

Radisson Phuket Mai Khao Beach Construction Progress Report

Disclaimer: <https://turtlebayphuket.com/disclaimer/>